



**Fisher Engineering**

**77500, 77000**

50 Gordon Drive, Rockland, Maine 04841-2139 • www.fisherplows.com

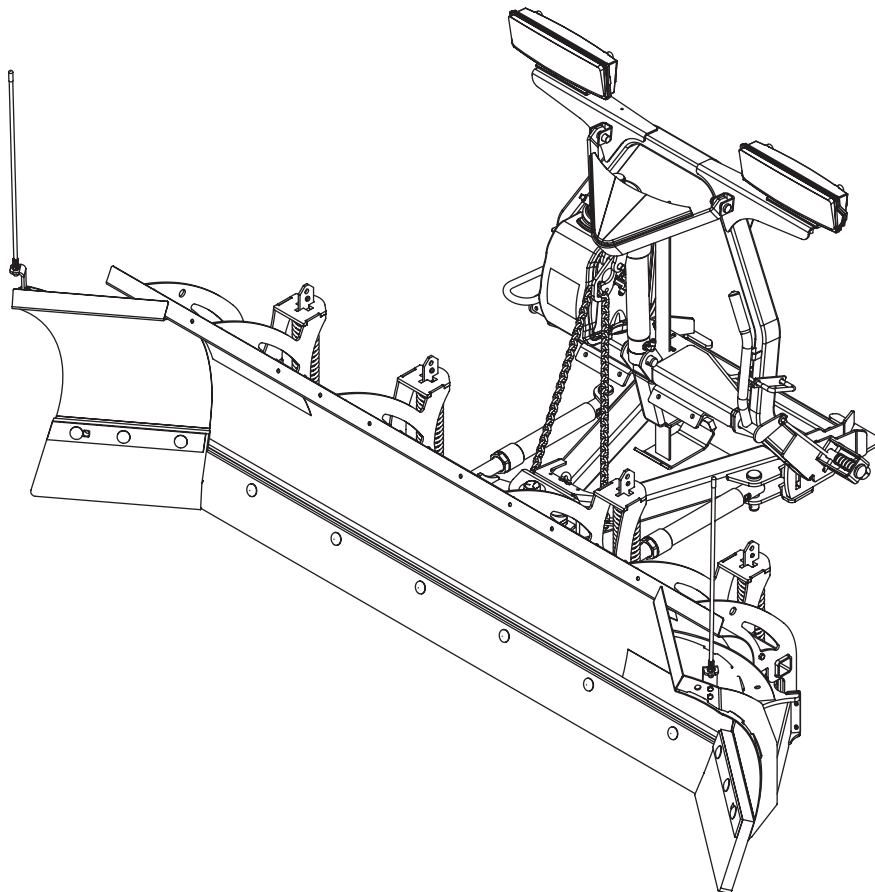
January 1, 2026  
Lit. No. 85887, Rev. 02



# Blade and Off-Truck Kit

## XRS™ Snowplow

### Parts List





**XRS™ BLADE COMPONENTS** ..... 4

**XRS™ OFF-TRUCK KITS** ..... 6

    A-Frame Components ..... 6

    Headgear Components ..... 8

    Hydraulic Unit ..... 10

    Hydraulic Unit Cover Assembly ..... 12

    Lift and Angle Ram Components ..... 13

    Hoses and Fittings ..... 13

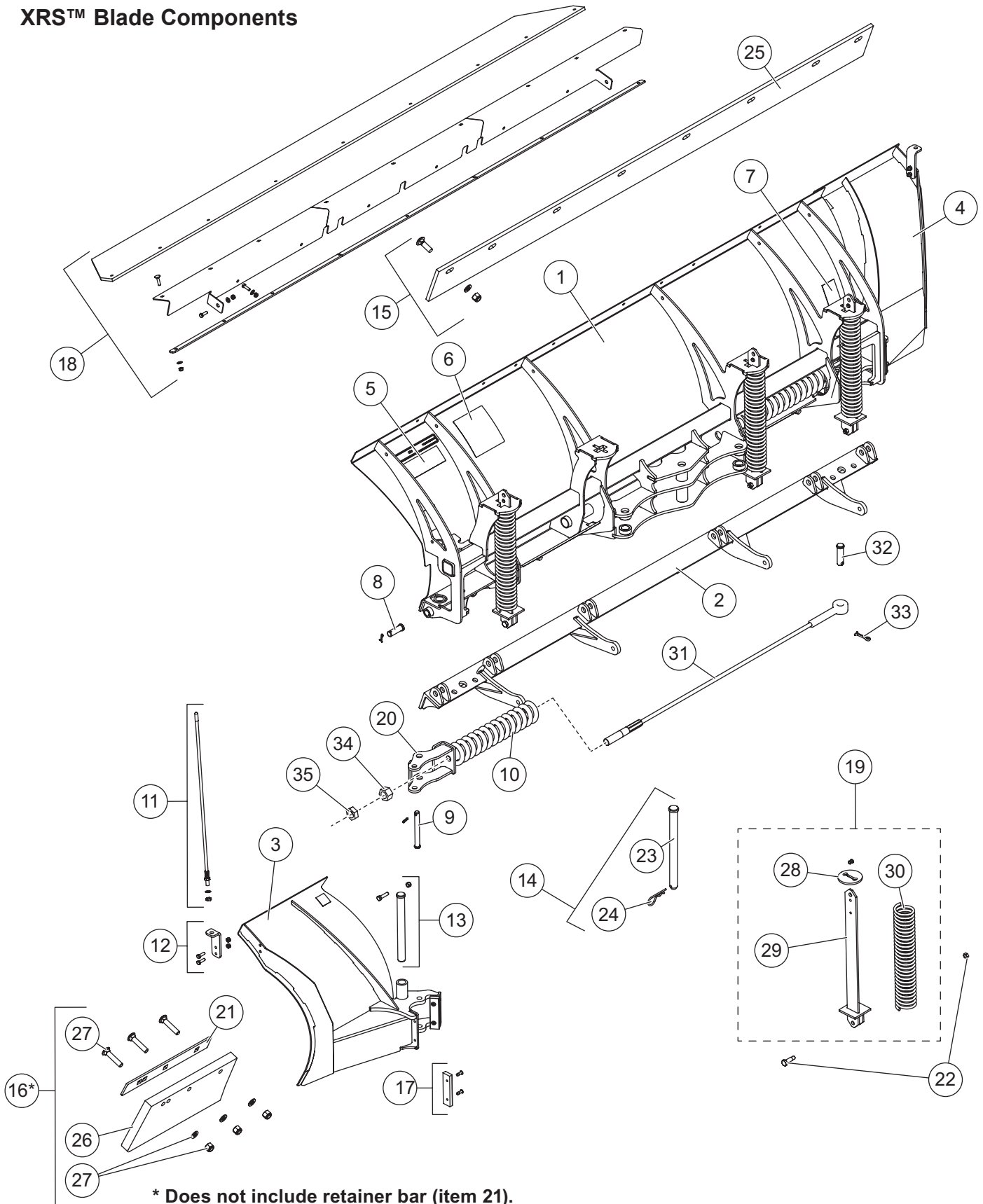
    Electrical Components ..... 14

    Vehicle-Side Wiring Diagram – 3-Port, 2-Plug Systems ..... 15

    Headlamp Kit – Halogen ..... 16

    Headlamp Kit – LED ..... 17

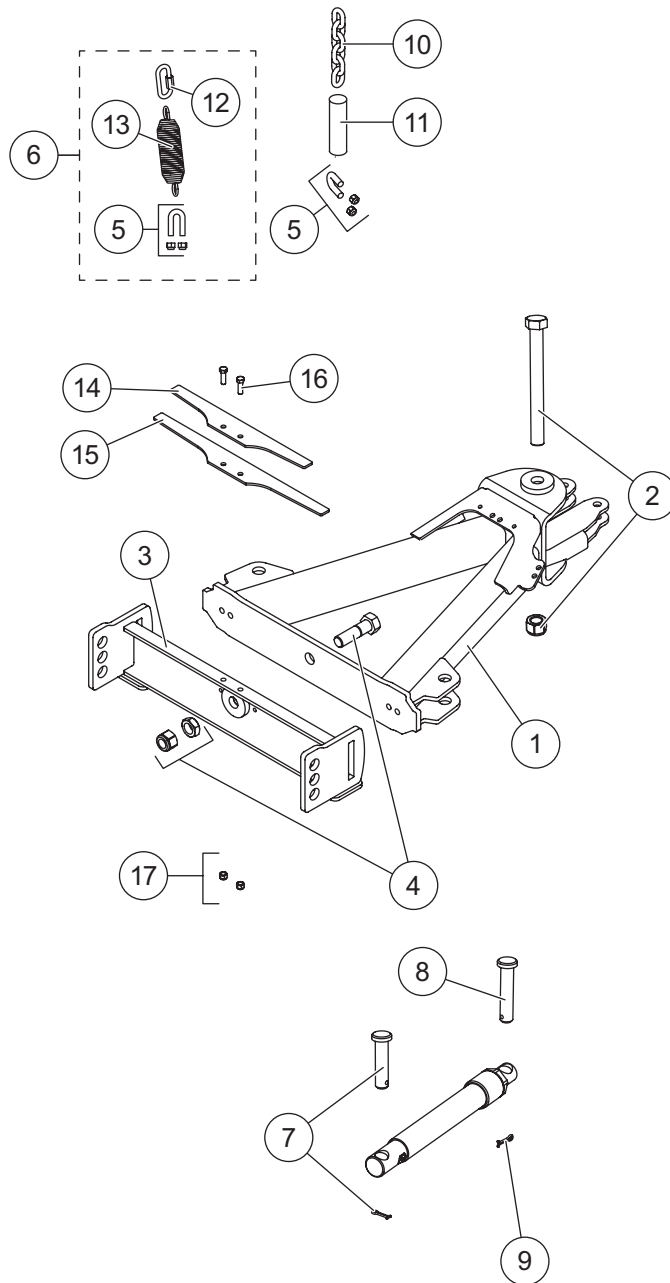
XRS™ Blade Components



XRS™ Blade Components							
Item	Part	Qty	Description	Item	Part	Qty	Description
1	76775	1	XRS Blade w/Labels	15	76779	1	XRS Cutting Edge Kit
2	76773	1	Base Angle	ns*	85750	1	XRS Poly Cutting Edge Kit
3	76770	1	Wing – DS	16	76767	1	Wing Cutting Edge Kit (does not include retainer bar)
4	76771	1	Wing – PS	17	42395	2	Bumper Kit
5	26211	1	Label – Logo, STORM GUARD™	18*	42384	1	Deflector Kit
6	59900	1	Label – Warning/Caution, Snowplows	19	50665	4	Spring Assembly Kit
7	32593EN	2	Label – Warning, Multiple Pinch Points	20	76772	2	Spring Guide
8	84844	6	3/4 x 2-5/16 Base Angle Pin Kit	21	76774	2	Retainer Bar XRS
9	76769	2	Spring Guide Pin Kit	22	40905	4	Shoulder Bolt w/Locknut
10	42725	2	Wing Spring	ns	86821	1	Label – Logo, XRS
11	27195	1	Flexible Blade Guide Kit – 26"	ns	20238	1	Label – Logo, FISHER®
12	50646	1	Blade Guide Bracket Kit	ns	42389	2	Cable Assembly w/Hardware
13	42396	2	Hinge Pin Kit				
14	87255		Wing Lock Pin Kit				
<b>Item 14</b>				<b>87255 Wing Lock Pin Kit</b>			
23	42738	2	3/4 x 9 Clevis Pin	24	91962	2	1/8 Hairpin Cotter
<b>Item 15</b>				<b>76779 XRS Cutting Edge Kit</b>			
25	76778	1	XRS Cutting Edge	ns	41774	1	Bolt Bag – XRS Cutting Edge
<b>Item 16</b>				<b>76767 Wing Cutting Edge Kit</b>			
26	76776	1	Wing Cutting Edge	27	76768	1	Bolt Bag – Wing Cutting Edge
<b>Item 19</b>				<b>50665 Spring Assembly Kit</b>			
28		1	Removable Spring Disc	30	50663	1	Trip Spring
29	50664	1	Spring Bar				
				<b>42389 Cable Assembly w/Hardware</b>			
31		1	Cable Assembly – Wing	34	B61343	1	3/4-10 Hex Nut
32	B61563	1	0.625 x 2.33 Clevis Pin	35	B61615	1	3/4-10 Hex Jam Nut
33	90601	1	1/4 x 1-1/2 Cotter Pin				
G = Grade				ns = not shown			

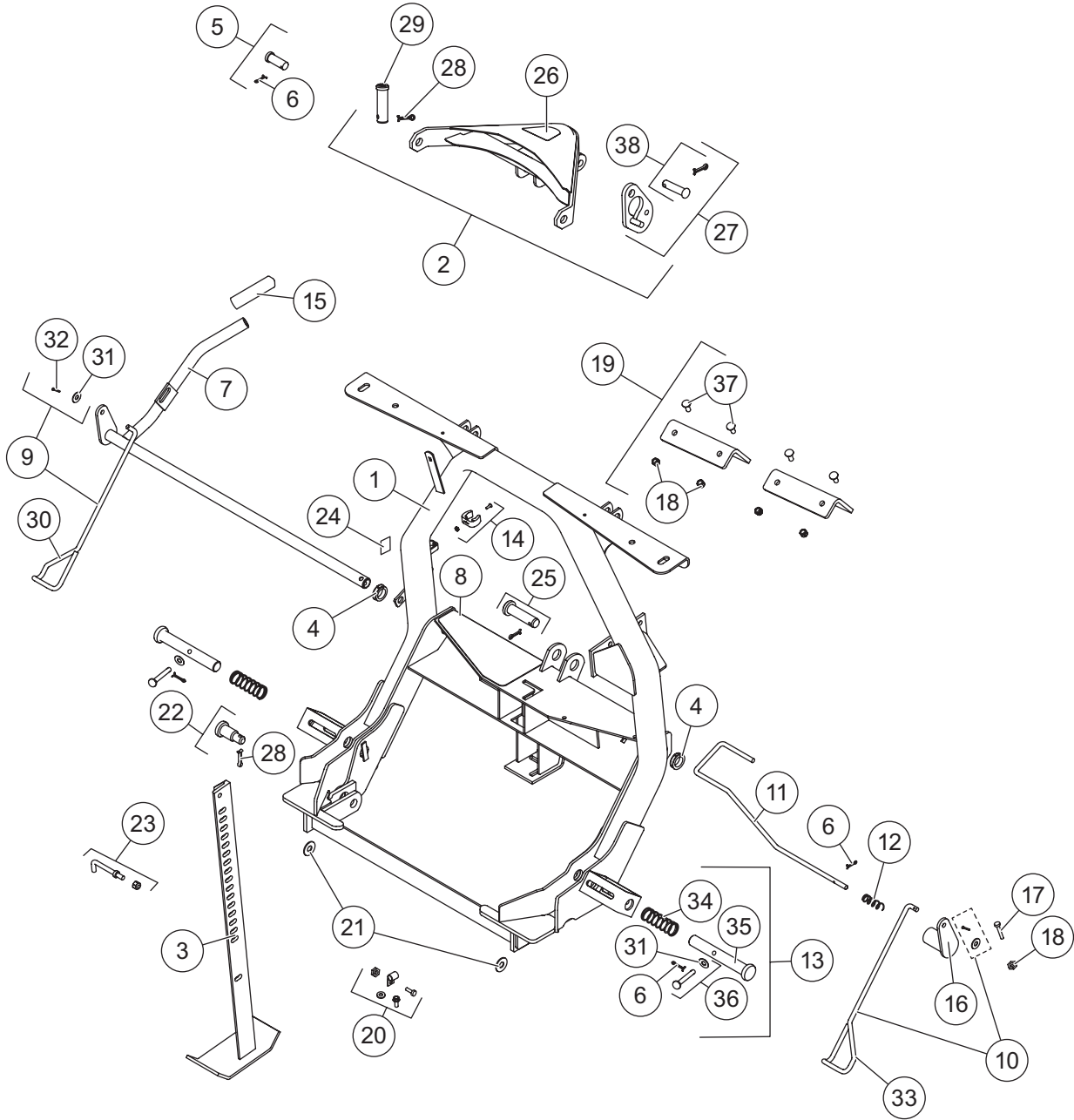
\* Accessory only.

A-Frame Components



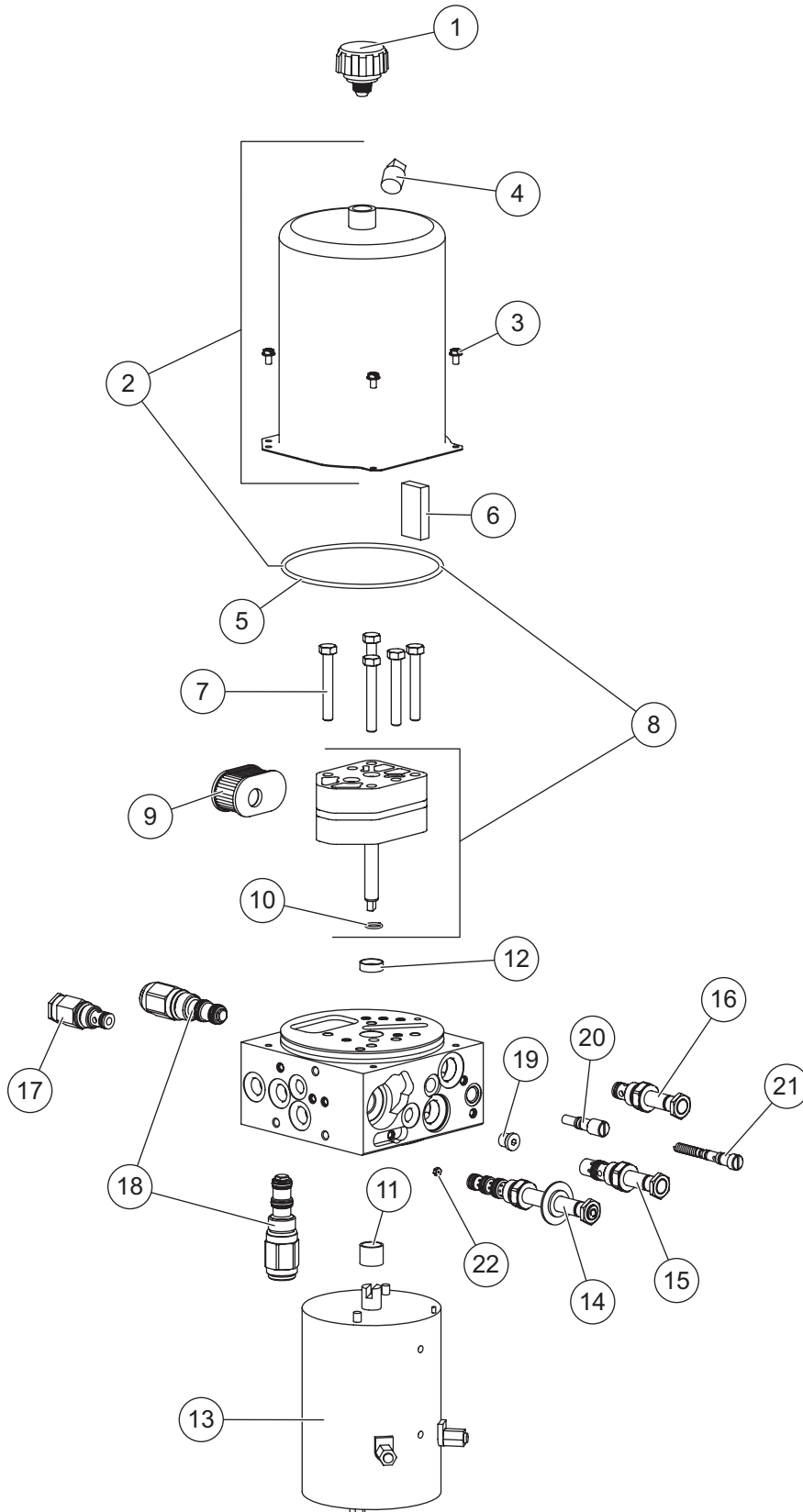
<b>XRS™ A-Frame Components</b>							
<b>Item</b>	<b>Part</b>	<b>Qty</b>	<b>Description</b>	<b>Item</b>	<b>Part</b>	<b>Qty</b>	<b>Description</b>
1	42800	1	A-Frame	7	7903K	2	1 x 4-1/16 Anchor Pin Packet w/Cotter
2	50668	1	Pivot Bolt Kit	8	22260	2	1 x 4-3/4 Clevis Pin
3	57325	1	Pivot Beam	9	90601	2	1/4 x 1-1/2 Cotter Pin
4	52621	1	Pivot Beam Fastener Kit	10	26999-1	1	5/16 Grade 43 Chain Bag
5	A6148K	2	U-Bolt Assembly Packet	11	51110	2	Shrink Tube, 1" ID
6	49521	1	Spring/U-Bolt/Link Kit	ns	51130	1	Leaf Spring Kit
<b>Item 4 52621 Pivot Beam Fastener Kit</b>							
		1	1-8 x 3-1/2 Hex Cap Screw G5			1	1-8 Hex Locknut GB
		1	1-8 Hex Jam Nut G5				
<b>Item 6 49521 Spring/U-Bolt/Link Kit</b>							
5	A6148K	1	U-Bolt Assembly Packet	13	27074	1	Spring Extension
12	68340	1	Quick Link				
<b>51130 Leaf Spring Kit</b>							
14		1	Upper Leaf Spring	16		2	3/8-16 x 1-1/4 Hex Cap Screw G5
15		1	Lower Leaf Spring	17		2	3/8-16 Hex Locknut GB
G = Grade				ns = not shown			

Headgear Components



XRS™ Headgear Components							
Item	Part	Qty	Description	Item	Part	Qty	Description
1	44558-2	1	Headgear	14	27162K-1	1	Stop Clip Kit
2	28350-2	1	Lift Arm Service Kit	15	27535	1	Handle Cover Kit
3	27462	1	Jack	16	27465	1	Link Arm
4	27163K	1	Bushing Kit (pkg of 2)	17	90043	1	3/8-16 x 2 Hex Cap Screw G5
5	4289K	2	3/4 x 2 Machine Pin Packet	18	91333	1	3/8-16 Hex Locknut GB
6	90658	3	5/32 x 1-1/4 Cotter Pin	19	86847	1	Stacking Stop Kit
7	27468	1	Handle, Link Arm Assembly	20	27172K	2	Clamp Loop Kit
8	27451	1	Label – Attach/Detach, MM2 Headgear	21	91192	2	1-3/4 Round Flat Washer
9	27166K	1	Wire Cam Kit – DS	22	27177K	2	Step Pin Kit
10	27167K	1	Wire Cam Kit – PS	23	27164K	1	Handle Kit
11	27478	1	Jack Lock	24	69689	1	Label – Logo, SECURITY GUARD™
12	27461	1	3/4 OD x 3-1/2 Compression Spring	25	43603	1	1 x 3-3/4 Clevis Pin Kit
13	27168K	2	Connecting Pin Kit				
<b>Item 2 28350-2 Lift Arm Service Kit</b>							
		1	Lift Arm, Heavy Duty	28	90601	2	1/4 x 1-1/2 Cotter Pin
26	26777	1	Label – Nameplate, Minute Mount 2	29	95720	2	1 x 3-5/16 Clevis Pin HT
27	28991	1	Stop Link Kit				
<b>Item 5 4289K 3/4 x 2 Machine Pin Packet</b>							
		1	3/4 x 2 Pin	6	90658	1	5/32 x 1-1/4 Cotter Pin
<b>Item 9 27166K Wire Cam Kit – DS</b>							
30			Wire Cam – DS	32	91902	1	1/8 x 1 Cotter Pin
31	90315	1	3/8 Flat Washer Type A Wide				
<b>Item 10 27167K Wire Cam Kit – PS</b>							
33			Wire Cam – PS	32	91902	1	1/8 x 1 Cotter Pin
31	90315	1	3/8 Flat Washer Type A Wide				
<b>Item 13 27168K Connecting Pin Kit</b>							
34	821	1	1" ID x 3-1/2 Compression Spring	36	26219	1	3/8 x 3-1/4 Clevis Pin Kit
35	26833	1	1 x 6-15/16 Pin				
<b>Item 19 86847 Stacking Stop Kit</b>							
		2	Stacking Stop	37	90201	4	3/8-16 x 1 Carriage Bolt G5
18	91333	4	3/8-16 Hex Locknut GB				
<b>Item 22 27177K Step Pin Kit</b>							
		1	Step Pin	28	90601	1	1/4 x 1-1/2 Cotter Pin
<b>Item 27 28991 Stop Link Kit</b>							
		1	Stop Link	38	29037	1	5/8 x 2-5/8 Clevis Pin w/Cotter
<b>Item 36 26219 3/8 x 3-1/4 Clevis Pin Kit</b>							
		1	3/8 x 3-1/4 Clevis Pin	31	90315	1	3/8 Flat Washer Type A Wide
6	90658	1	5/32 x 1-1/4 Cotter Pin				
		ns = not shown				HT = Heat Treated	
						G = Grade	

Hydraulic Unit



97925 Hydraulic Unit 97750* Hydraulic Unit Service Kit							
Item	Part	Qty	Description	Item	Part	Qty	Description
1	21727-2K	1	Breather Pressure Control	15	44332	1	Valve – SVCV08-20 w/Nut
2	44327-3	1	Reservoir Kit	16	49227K-2	1	Valve – SV08-2004 w/Nut
3	66607	4	#10-24 x 5/16 Machine Screw	17	42889	1	Relief Valve, 4000 psi
4	92079	1	3/8 Plug NPTF Square	18	42888	2	Counterbalance Valve
5	66519	1	O-Ring 2-250	19	44344	1	7/16-20 Socket O-Ring Boss Plug
6	73897	1	Magnet	20	48517	1	Quill Assembly, 1/2-20 Thread
7	90073	5	5/16-18 x 2-1/4 Hex Cap Screw G5	21	49138K-5	1	Relief Valve Kit (2 sets)
8	42887	1	Pump Kit	22	43370	1	0.1 Orifice Plate
9	56789-5	1	Suction Filter	ns	29099	2	1/4-20 x 1/4 Hex Washer-Head Thread-Rolling Screw
10	56274	1	O-Ring -013	ns	44326‡	1	1/4-20 x 1/2 6-Lobe Round Washer-Head Screw (pkg of 5)
11**	64596-1	1	Sleeve Bearing and Shaft Seal Kit (incl. item 12)	ns	44355	2	1/4-20 x 5/8 Hex Washer-Head Thread-Rolling Screw
12†	66515	1	Pump Shaft Seal				
13	21500K-1	1	Motor Assembly 4-1/2				
14	48291	1	Valve – 4-Way, 3-Position, Closed Ctr				
O-Ring Service Kits							
–	56657-6	–	O-Ring/Back-Up Ring Kit (does not contain O-rings for cartridge valves)	–	49259-2	–	Seal Kit – Valves SV08-30, -31, -33, -40, -41, -43, -45; SVCV08-20; PC08-30; Crossover Relief Valve
–	49258-2	–	Seal Kit – Valves SV08-2004, CV08-20, SF08-2015	–	52303	–	Seal Kit – Counterbalance Valve
ns = not shown				G = Grade			

\* Includes 97925 hydraulic unit, 97950 cover assembly, and plow-side electrical components (p. 14).

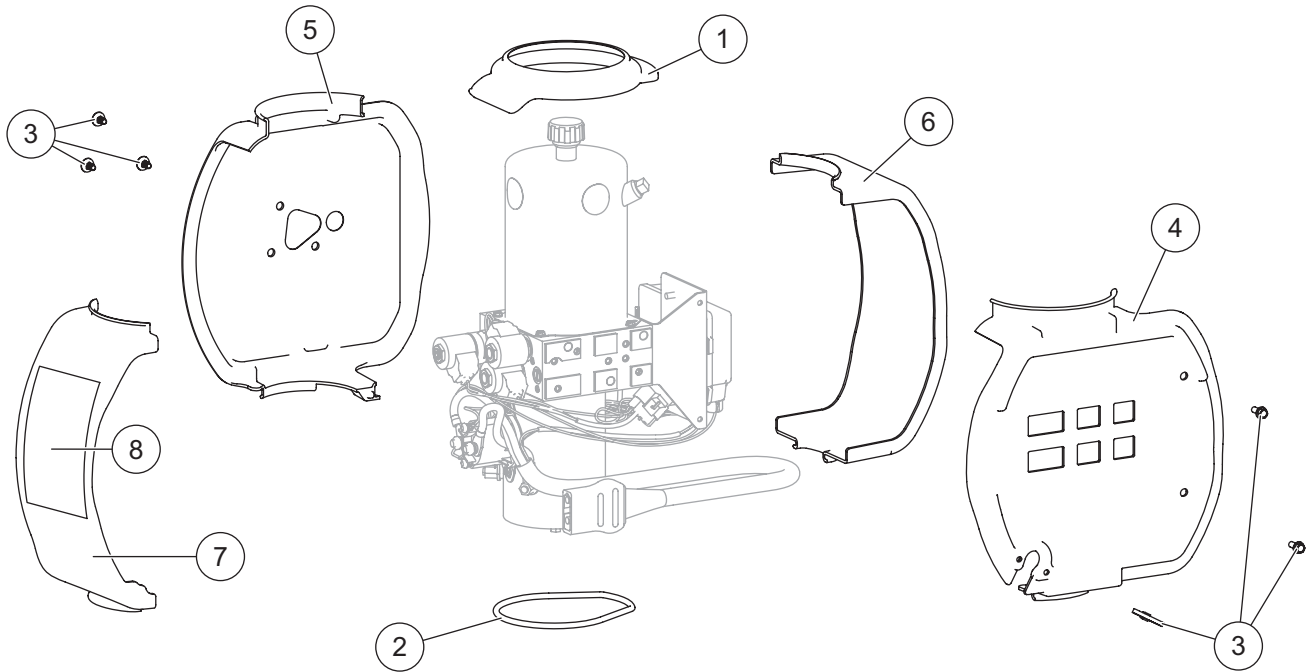
\*\* Use 64589 tool for bearing sleeve replacement (includes 1 bearing).

† Use 28856 tool for pump shaft seal replacement (includes 1 seal).

‡ Includes 8" and 14" cable ties.

Go to [www.fisherplows.com](http://www.fisherplows.com) for hydraulic unit service information and specifications.

Hydraulic Unit Cover Assembly

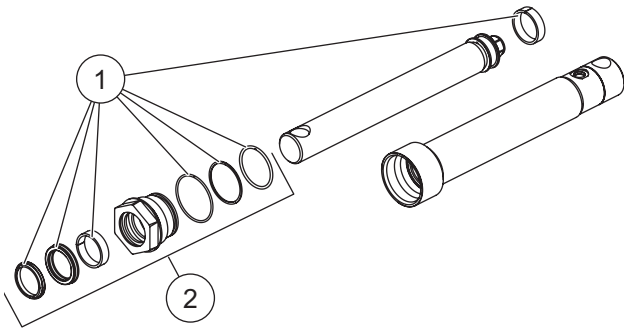


97950 Hydraulic Unit Cover Assembly							
Item	Part	Qty	Description	Item	Part	Qty	Description
1	44352	1	Top Retainer Ring	5		1	Cover, Side 2
2	44366	1	Bottom Retainer Ring	6		1	Cover, Side 3
3	44326*	1	1/4-20 x 1/2 6-Lobe Round Washer-Head Screw (pkg of 5)*	7		1	Cover, Side 4
4		1	Cover, Side 1	8	48806	1	Label – Hydraulic Information, Cover
				ns	61536	1	Cable Tie, 14"

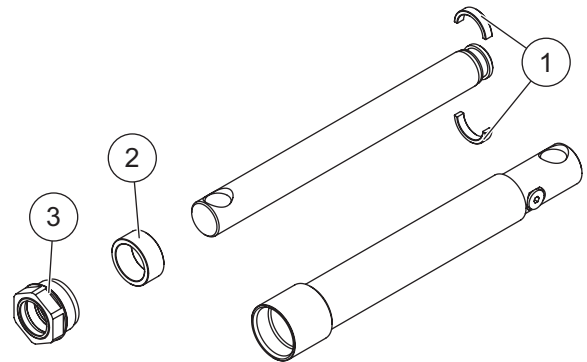
ns = not shown

\* Includes 8" and 14" cable ties.

### Lift and Angle Ram Components

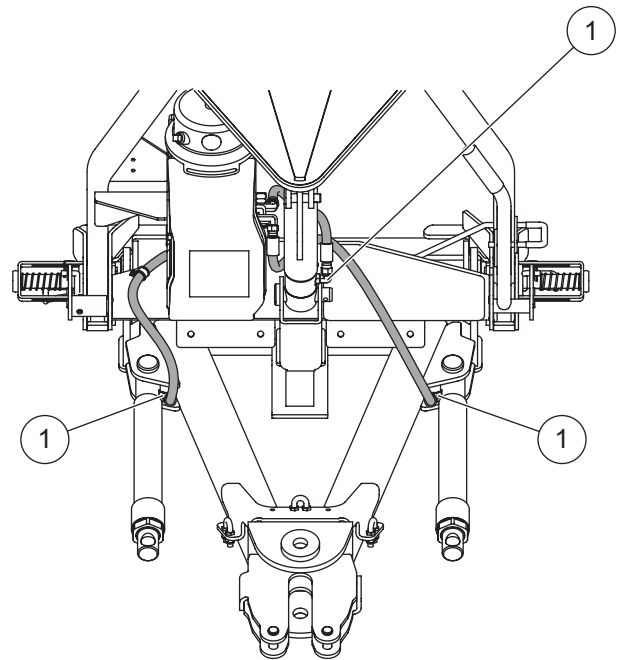
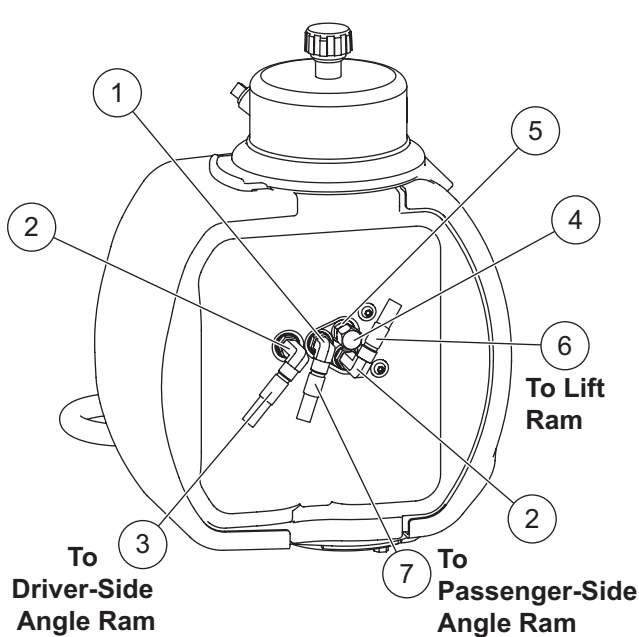


43132-1 Lift Ram Assembly 1-3/4 x 10			
Item	Part	Qty	Description
1	77924	1	Seal Kit
2	43135	1	Gland Nut Assembly



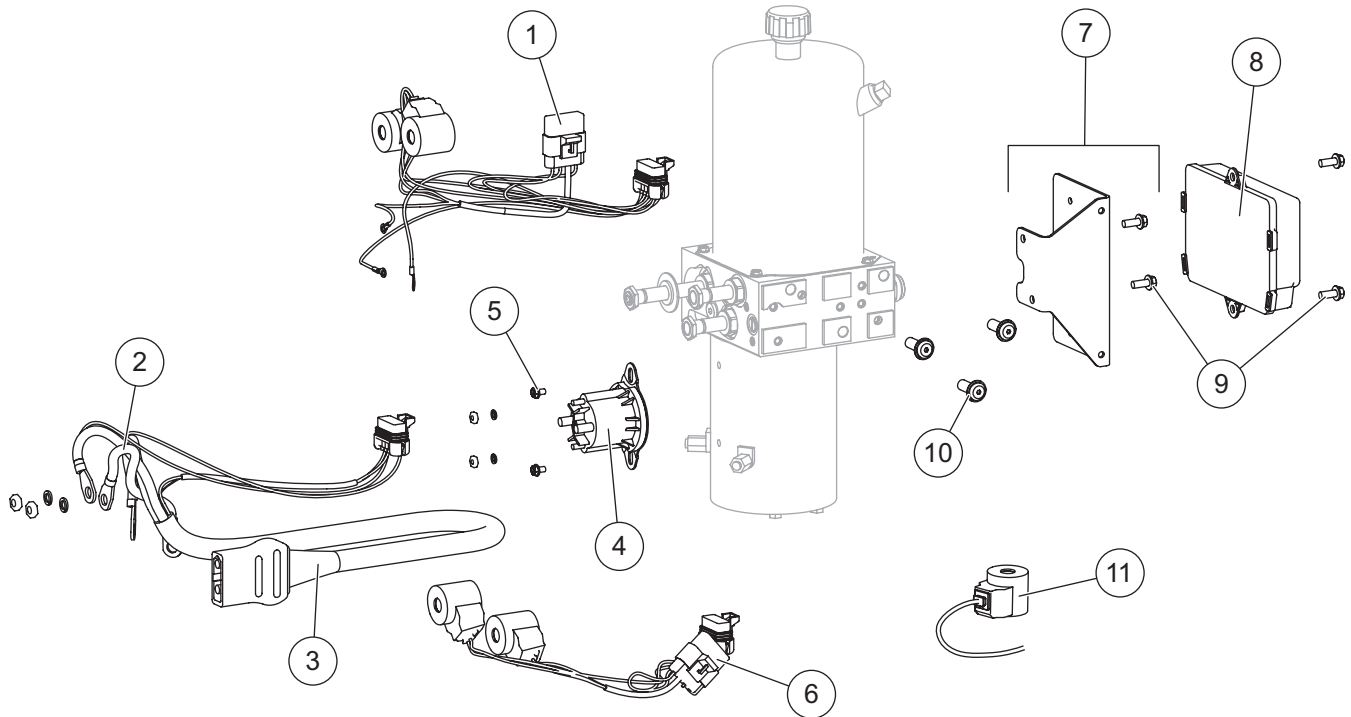
49461 Angle Ram Assembly 1-1/2 x 10			
Item	Part	Qty	Description
1	20118K	1	Split Bearing 1-1/2
2	56537	1	Spacer
3	48985	1	Gland Nut Assembly

### Hoses and Fittings



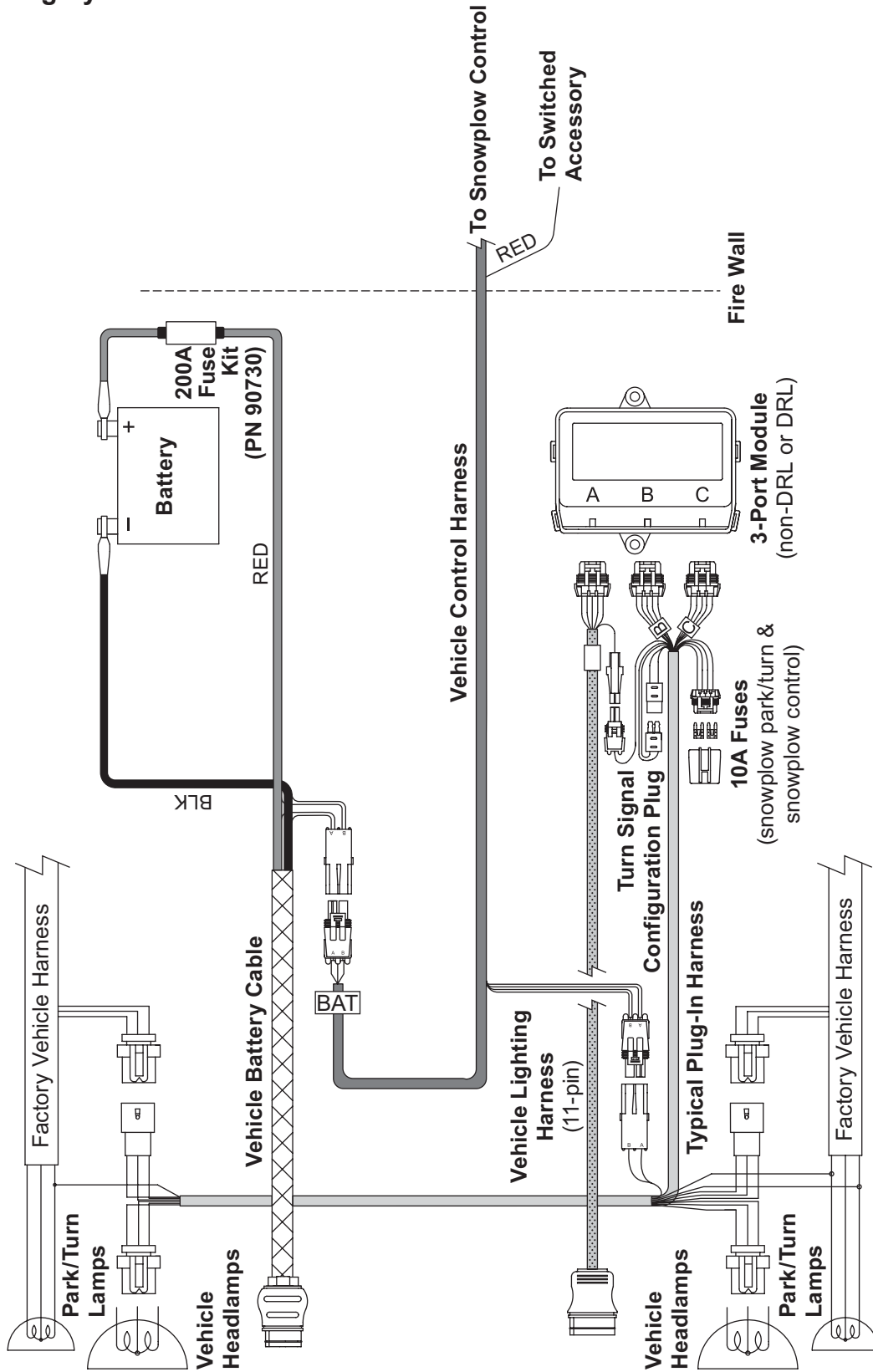
Hoses and Fittings							
Item	Part	Qty	Description	Item	Part	Qty	Description
1	56725	4	Elbow, 90° -6 M JIC/-6 M ORB	5	48332	1	Adapter 9/16-18 x 7/16-20 ORB
2	64212-1	2	Elbow, Extra Long 90° -6 M JIC/-6 M ORB	6	41094	1	1/4 x 18 Hose w/F JIC Ends
3	52279	1	3/8 x 45 Hose Kit w/F JIC Ends	7	49496	1	3/8 x 42 Hose w/F JIC Ends
4	44346	1	Drain Cap, -6 F JIC				
F = Female				M = Male			

Electrical Components

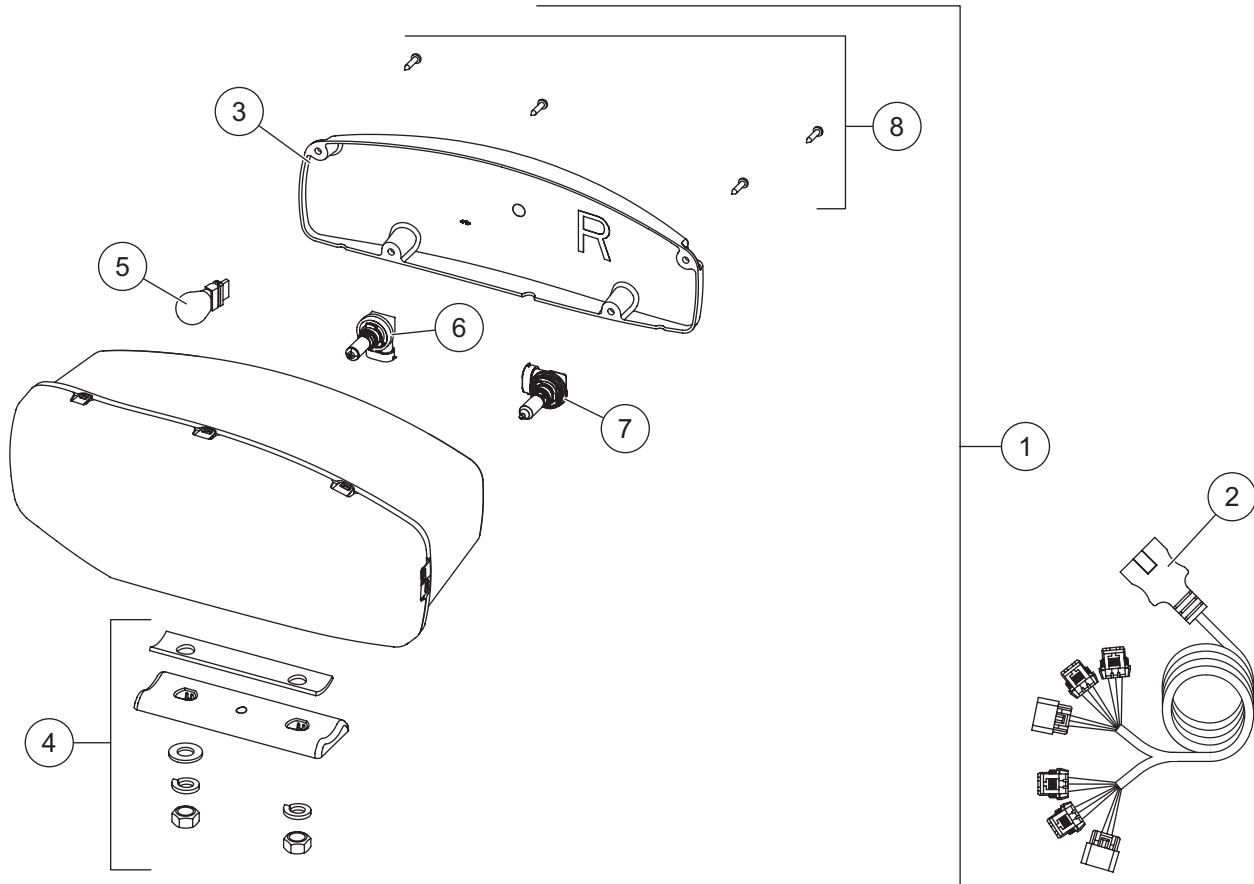


Plow-Side Electrical Components							
Item	Part	Qty	Description	Item	Part	Qty	Description
1	48858	1	Harness Plow Control, 2-Coil (port B)	9	44355	4	1/4-20 x 5/8 Hex Washer-Head Thread-Rolling Screw
2	29071	1	Cable Assembly, 8"	10	98043	3	3/8-16 x 1 Button Cap Screw
3	42015	1	Plow Battery Cable	11	48294	4	Coil w/Wire Leads
4	42901	1	Motor Relay Kit, FLEET FLEX System	ns	61246	1	Cable Boot
5	29099	2	1/4-20 x 1/4 Hex Washer-Head Thread-Rolling Screw	ns	8329K	1	Dielectric Grease
6	29851	1	Harness Plow Control, 2-Coil (port C)	ns		3	Fuse, 5A Mini Automotive-Style (for items 1 & 6)
7	42893	1	Bracket – Plow Module				
8	44354-3	1	Plow Module				
Vehicle-Side Electrical Components							
*	72527	1	Vehicle Battery Cable	ns	61548K	1	Plug Cover Kit
*	28587	1	Vehicle Control Harness	*	29998	1	Fuse Cover (pkg of 5)
* For diagram see Vehicle-Side Harness Diagram				ns = not shown			

### Vehicle-Side Harness Diagram 3-Port, 2-Plug System



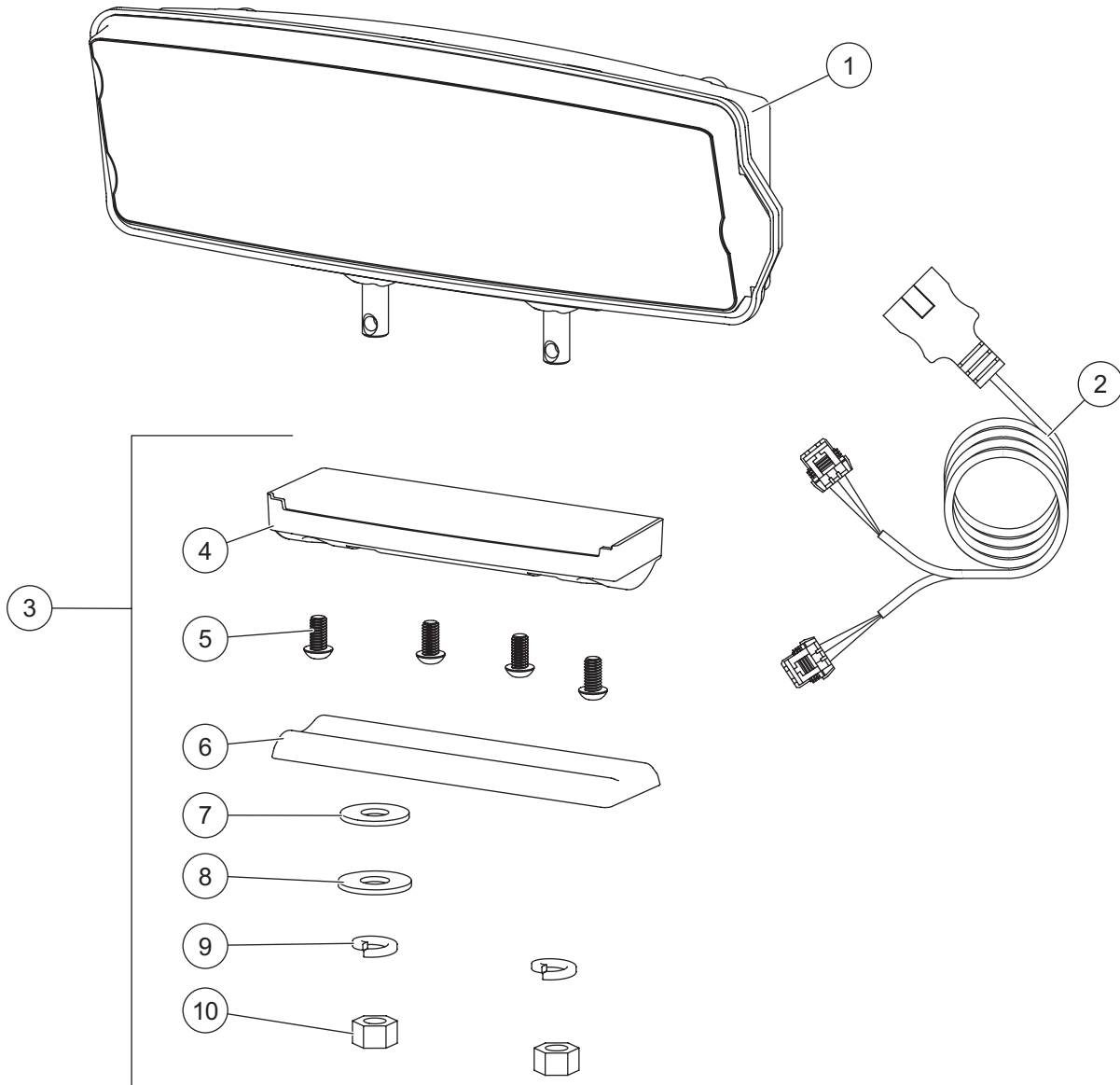
Headlamp Kit – Halogen



38800 Headlamp Kit H9/H11 (pair)							
Item	Part	Qty	Description	Item	Part	Qty	Description
1	38802	1	Headlamp Service Kit H9/H11 – PS	2	38807	1	Harness Service Kit H9/H11
ns	38801	1	Headlamp Service Kit H9/H11 – DS				
<b>Item 1</b>	<b>38801/38802 Headlamp Service Kit H9/H11 – PS/DS</b>						
3	38803	1	Rear Cover Kit H9/H11 – PS	6	38811	1	Headlamp Bulb Service Kit H11
ns	38812	1	Rear Cover Kit H9/H11 – DS	7	38809	1	Headlamp Bulb Service Kit H9
4	38804	1	Mounting Hardware Kit H9/H11	8	38808	1	Cover Screws Service Kit H9/H11 (pkg of 4)
5		1	Park/Turn Bulb (trade no. 4157NAK)				

ns = not shown

Headlamp Kit – LED



Headlamp Kit LED							
Item	Part	Qty	Description	Item	Part	Qty	Description
1	39901	1	Headlamp Service Kit LED – DS	3	39903	1	Mounting Hardware Kit LED
ns	39902	1	Headlamp Service Kit LED – PS	ns	72512	1	LED Harness Connector Cover (pkg of 2)
2	72548	1	Harness Service Kit LED				
<b>Item 3</b>				<b>39903 Mounting Hardware Kit LED</b>			
4		1	Plastic Casing	8		1	1/2 Flat Washer
5		4	1/4 Button Cap Screw	9		2	1/2 Lock Washer
6		1	Headlamp Swivel	10		2	1/2 Hex Nut
7		1	1/2 Rubber Washer	ns		1	Metal Insert
ns = not shown							



Fisher Engineering  
50 Gordon Drive  
Rockland, ME 04841-2139  
[www.fisherplows.com](http://www.fisherplows.com)

 A DIVISION OF DOUGLAS DYNAMICS, LLC

Copyright © 2026 Douglas Dynamics, LLC. All rights reserved. This material may not be used, reproduced, or copied in any manner, in whole or in part, in any printed, mechanical, electronic, film, or other distribution and storage media, nor analyzed or manipulated in any manner for the purpose of training artificial intelligence technologies or systems, without the written consent of Fisher Engineering. In accordance with Article 4(3) of the Digital Single Market Directive 2019/790, Fisher Engineering expressly reserves this work from the text and data mining exception. Authorization to photocopy items for internal or personal use by Fisher Engineering outlets or equipment owner is granted.

Fisher Engineering reserves the right under its product improvement policy to change construction or design details and furnish equipment when so altered without reference to illustrations or specifications used. Fisher Engineering or the vehicle manufacturer may require or recommend optional equipment for snow removal. Do not exceed vehicle ratings with a snowplow. Fisher Engineering offers a limited warranty for all equipment and accessories. See separately printed page for this important information. The following are registered (®) or unregistered (™) trademarks of Douglas Dynamics, LLC: FISHER®, Insta-Act®, Minute Mount® 2, STORM GUARD™.

Printed in U.S.A.